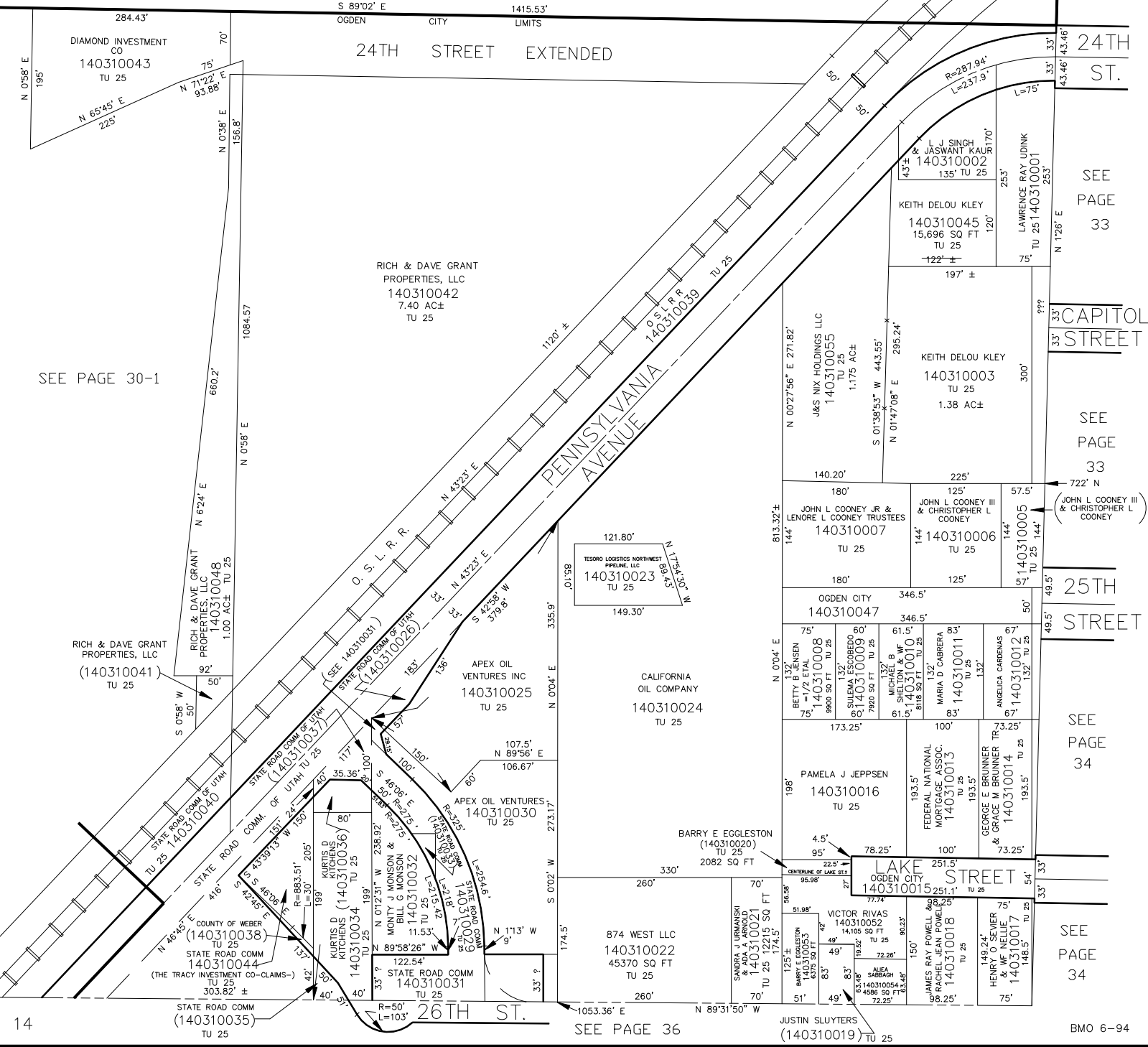


PART OF S.W. 1/4 OF SECTION 30, T6N., R1W., S.L.B. & M.

IN OGDEN CITY  
SCALE 1" = 100'

TAXING UNIT: 25

SEE PAGE 30



SEE PAGE 30-1

SEE PAGE 33

CAPITOL STREET

SEE PAGE 33

JOHN L. COONEY III & CHRISTOPHER L. COONEY

25TH STREET

SEE PAGE 34

LAKE STREET

SEE PAGE 34

SEE PAGE 36